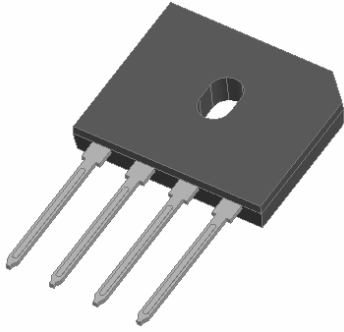


Bridge Rectifiers

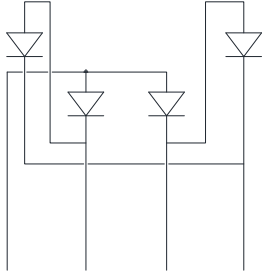


Features

- UL recognition, file #E230084
- Glass passivated chip junction
- Ideal for printed circuit boards
- High surge current capability
- Solder dip 275 °C max. 7 s, per JESD 22-B106

Typical Applications

General purpose use in AC/DC bridge full wave rectification for monitor, TV, printer, power supply, switching mode power supply, adapter, audio equipment, and home appliances applications.



Mechanical Data

Package: GBU

Molding compound meets UL 94 V-0 flammability rating, RoHS-compliant

Terminals:

-S -00 ne
ol :s



Maximum RMS Voltage	VRMS	V	35	70	140	280	420	560	700
Maximum DC blocking Voltage	VDC	V	50	100	200	400	600	800	1000
Average rectified output current @60Hz sine wave, R-load	With heatsink Tc =135	IO	A	4.0					
	Without heatsink Ta =25			2.3					
Forward Surge Current (Non-repetitive) @60Hz Half-sine wave, 1 cycle, Tj=25	IFSM	A	135						
Forward Surge Current (Non-repetitive) @1ms, square wave, 1 cycle, Tj=25			270						
Current squared time @1ms t 8.3ms Tj=25 , Rating of per diode	I ² t	A ² S	75.6						
Storage temperature	Tstg		-55 ~ +150						
Junction temperature	Tj		-55 ~ +150						
Dielectric strength @ Terminals to case, AC 1 minute	Vdis	KV	2.5						
Mounting torque @Recommend torque 5kg cm	Tor	kg cm	8						



GBU4005 THRU GBU410

Electrical Characteristics T_a



GBU4005 THRU GBU410

FIG3: Typical Forward Voltage

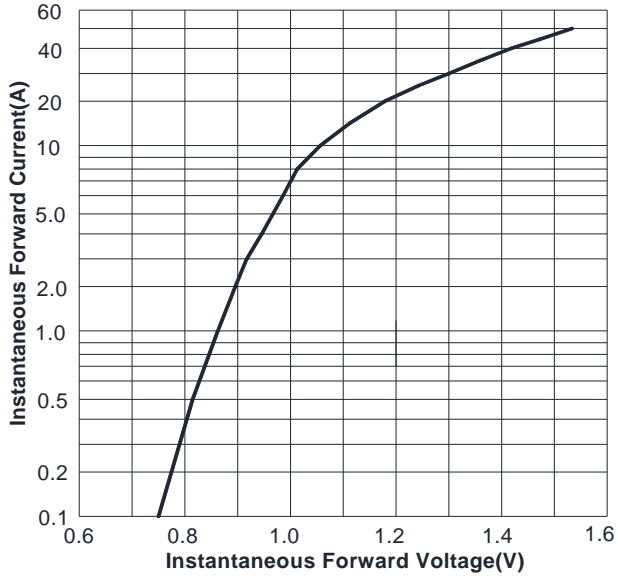
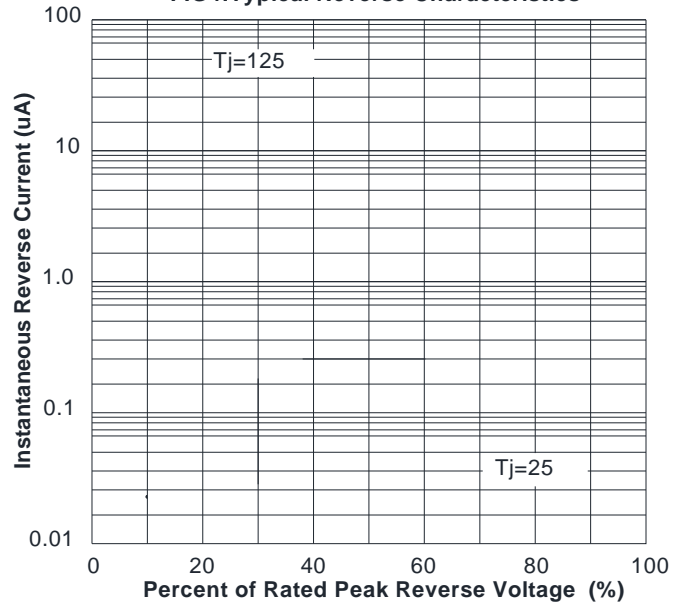


FIG4: Typical Reverse Characteristics



Outline Dimensions

GBU		
Dim	Min	Max
A	21.80	22.30
B	18.30	18.80
C	17.50	18.00
D	3.30	3.90
E	7.10	7.50
F	5.50	5.90
G	1.91	2.54
H	2.06	2.54
I	1.02	1.27
J	4.83	5.33
K	3.30	3.56
L	2.40	2.66
M	0.46	0.56

GBU4005 THRU GBU410
